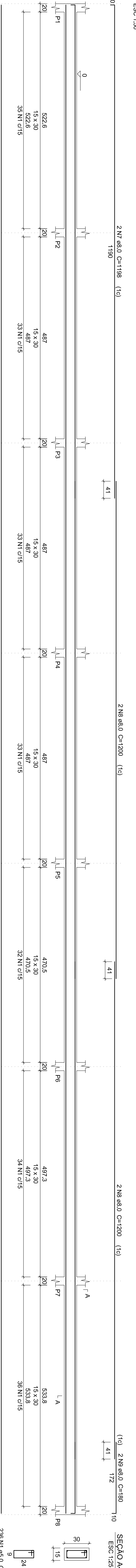
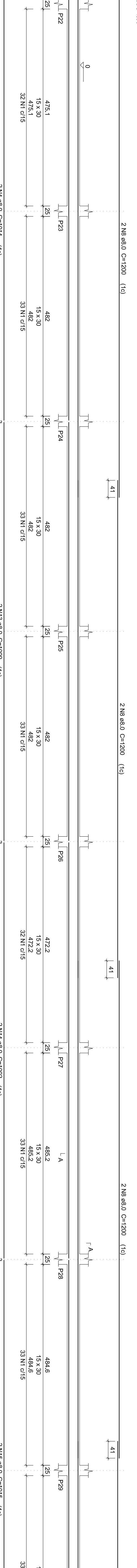


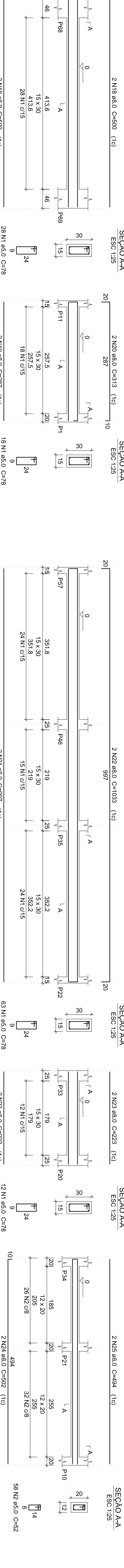
V1 = V3



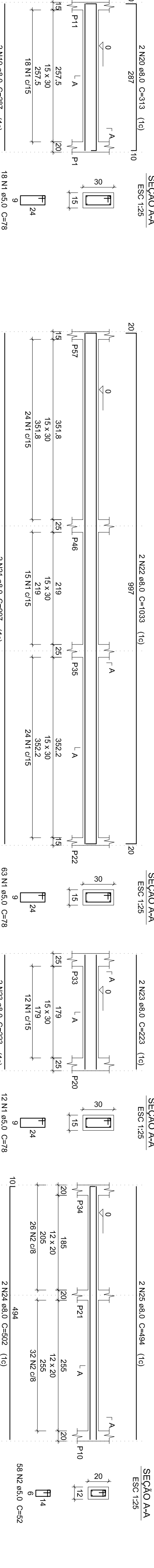
V5 V7 V8 V9



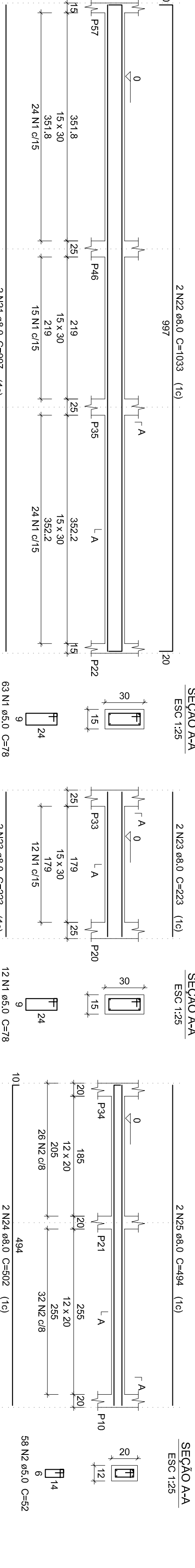
V11



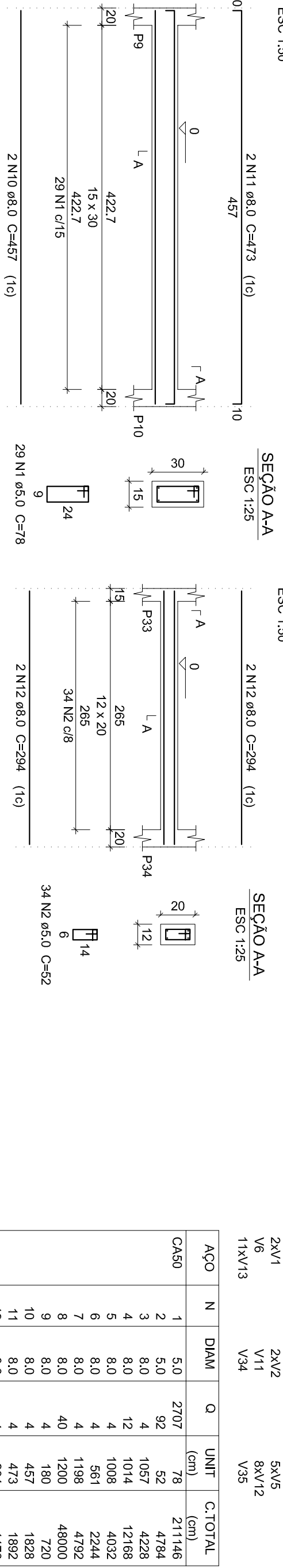
V12 V15 V17 V19 V21 V22 V27 V29



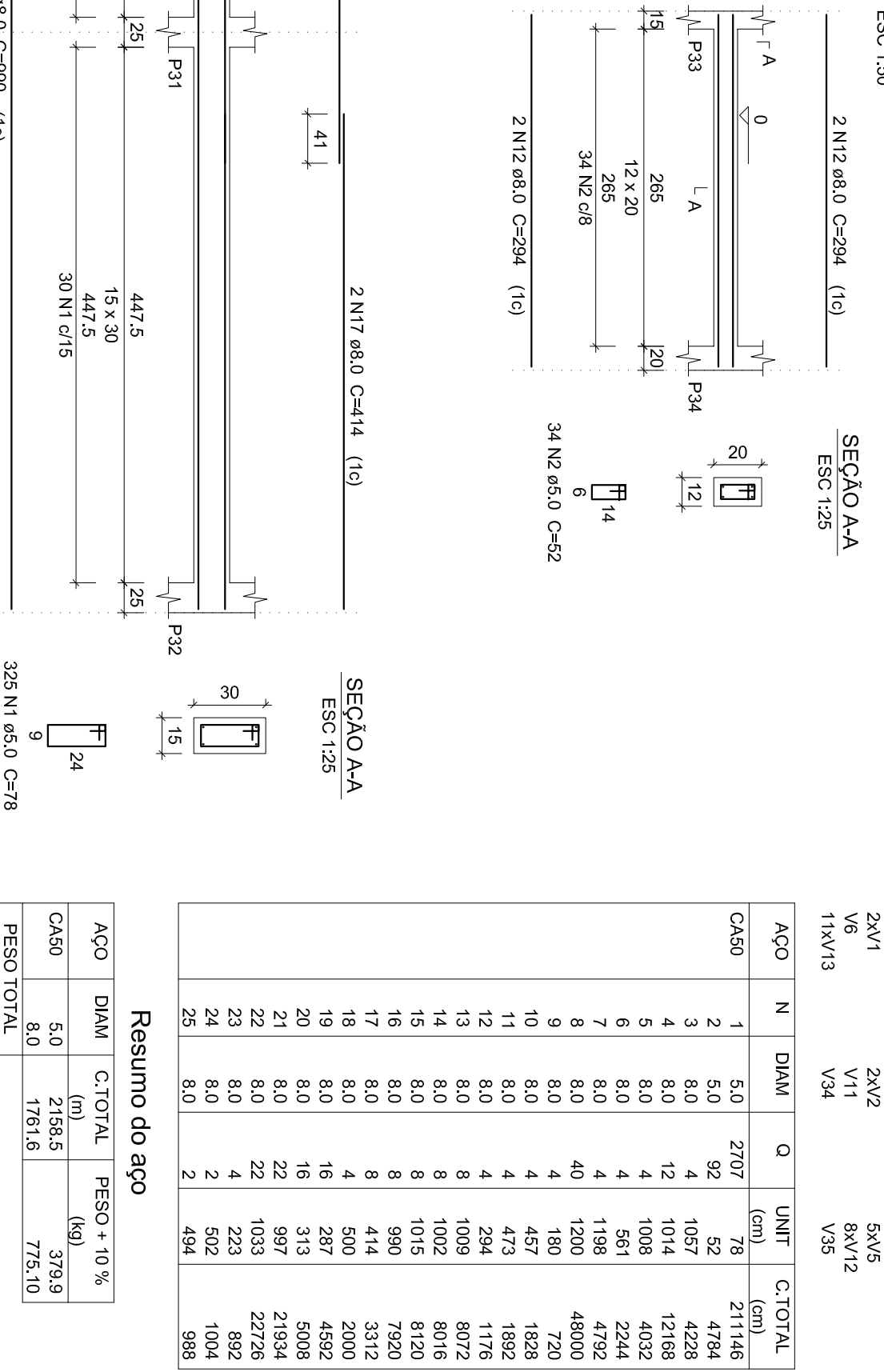
V13 V14 16 V18 V20 V23 V26 V28 V30 V31 V33



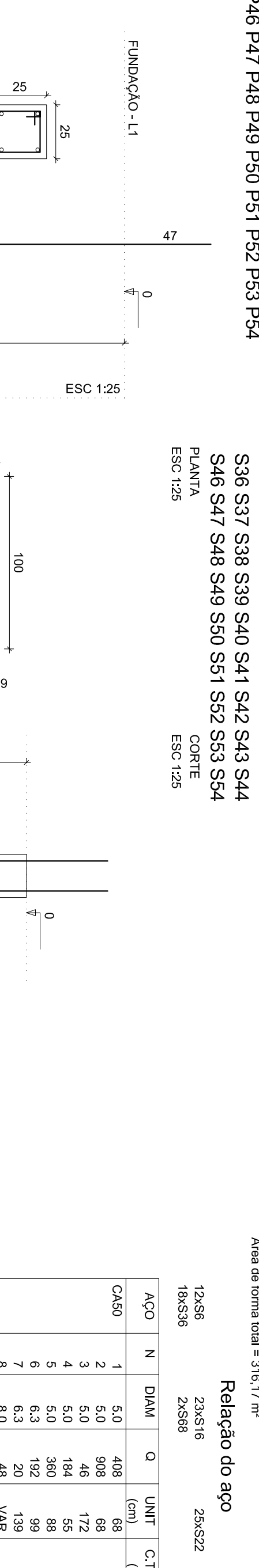
V2 = V4



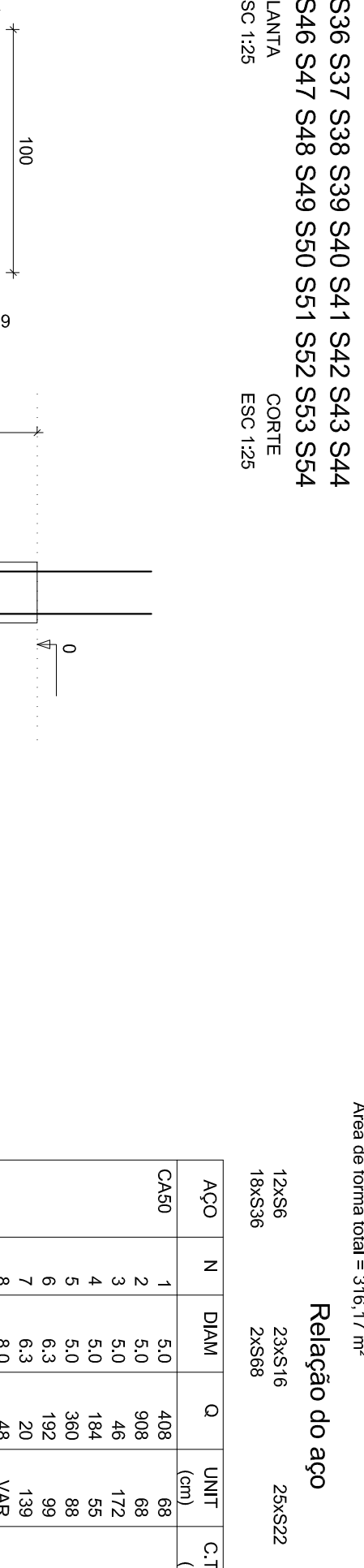
V6



P36 P37 P38 P39 P40 P41 P42 P43 P44

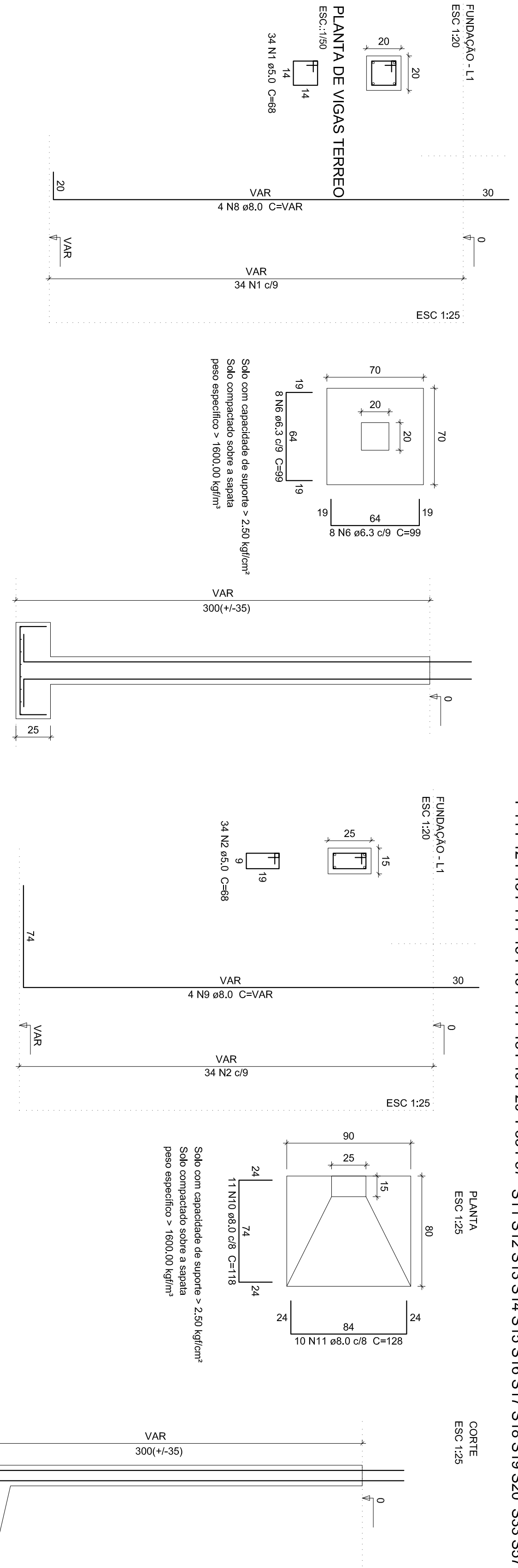


S38 S37 S38 S39 S40 S41 S42 S43 S44

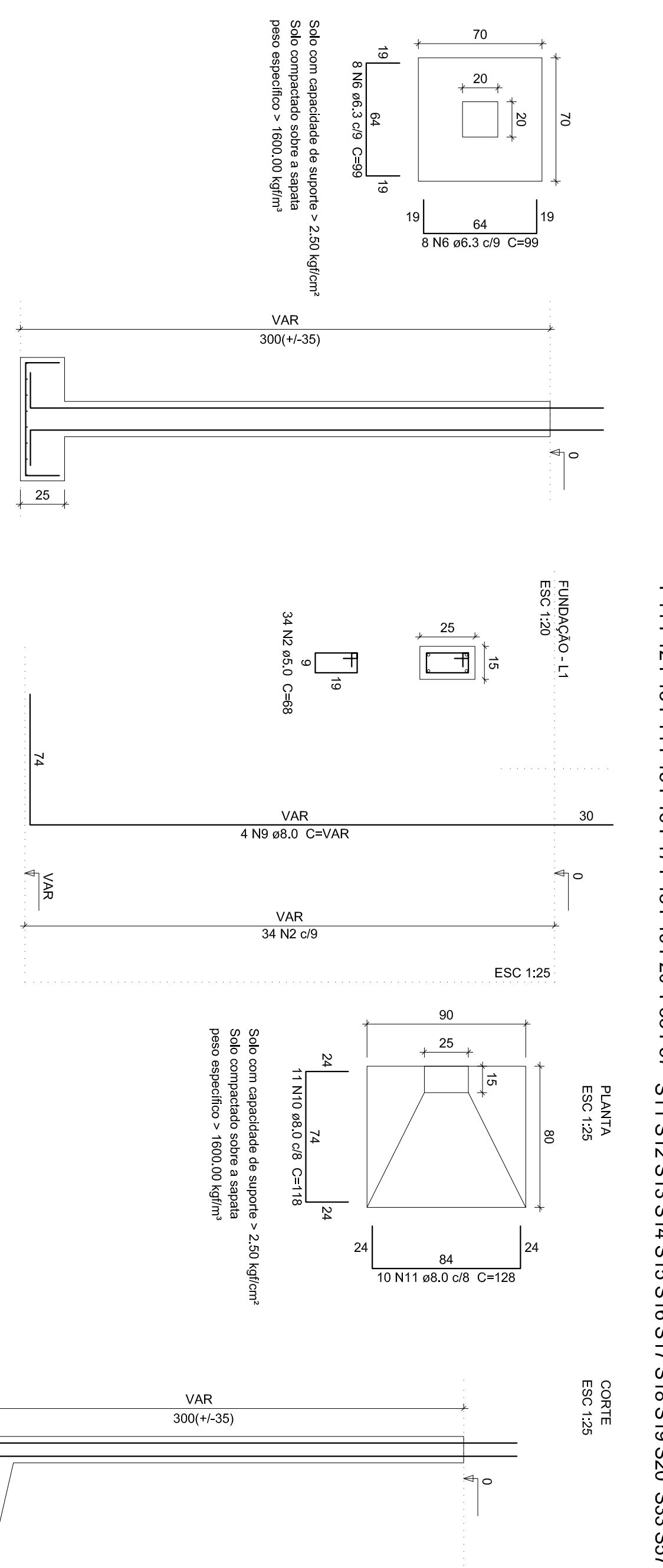


ANEXO XII

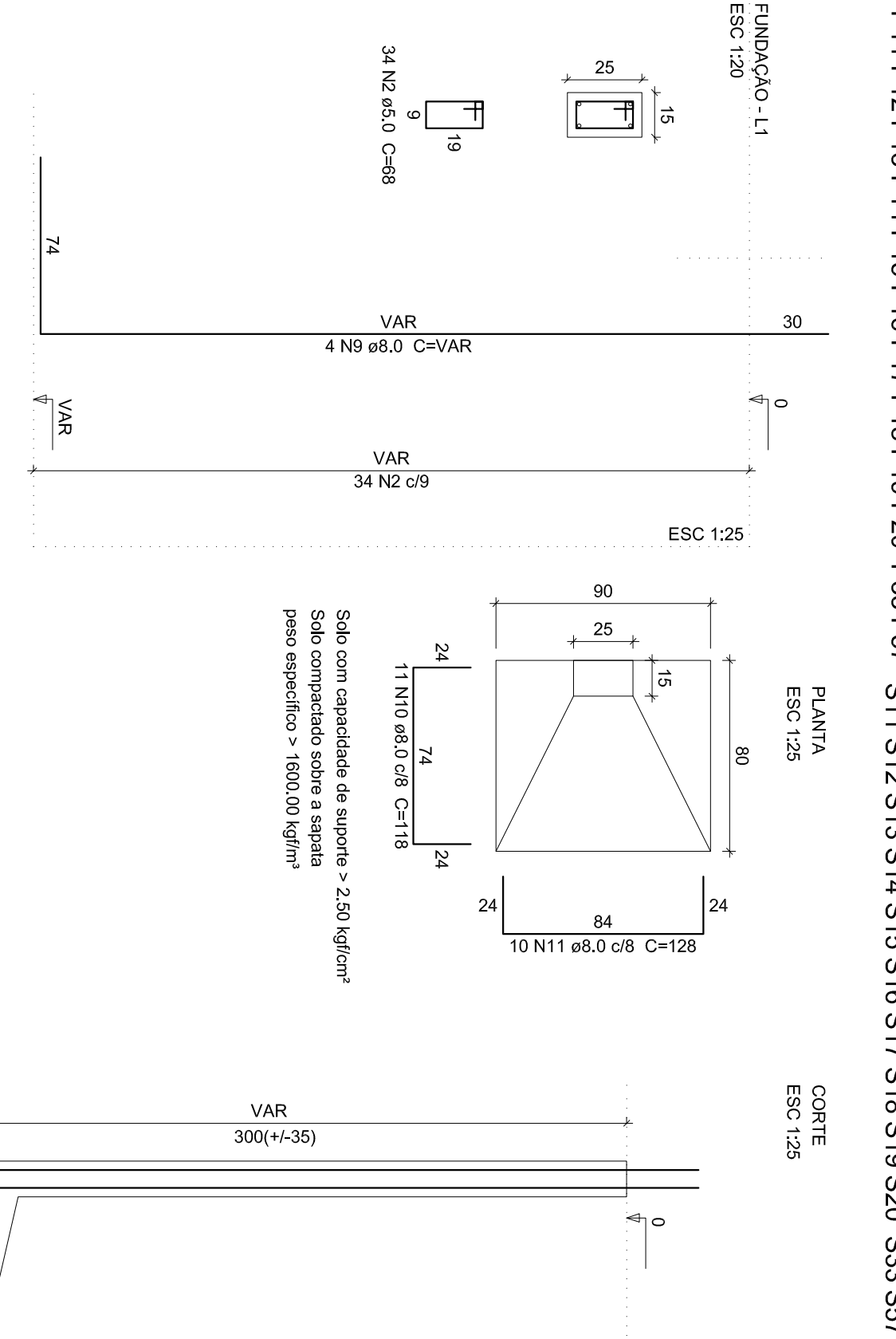
P1 P2 P3 P4 P5 P6 P7 P8 P9 P10 P21 P34



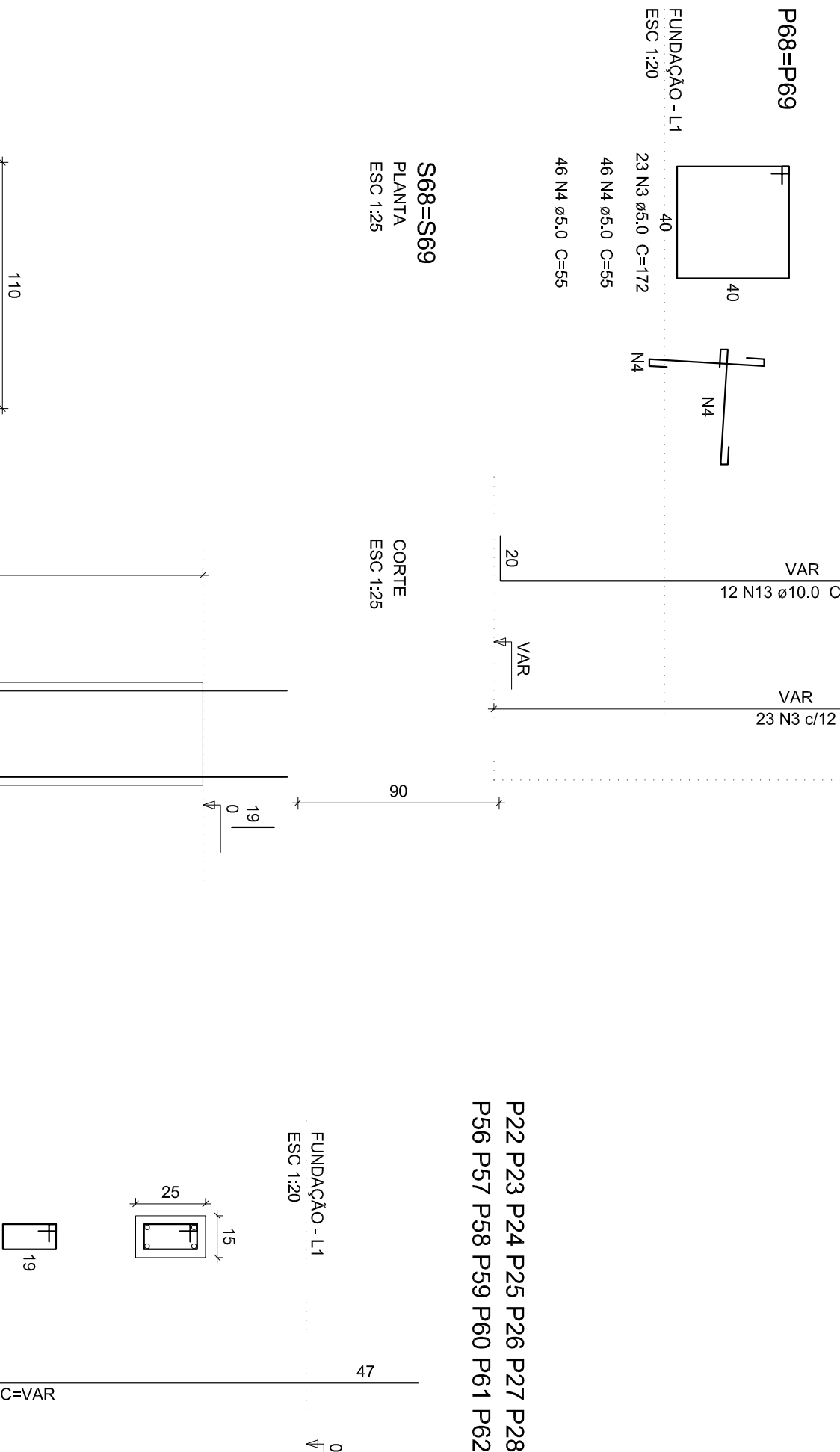
S1 S2 S3 S4 S5 S6 S7 S8 S9 S10 S21 S34



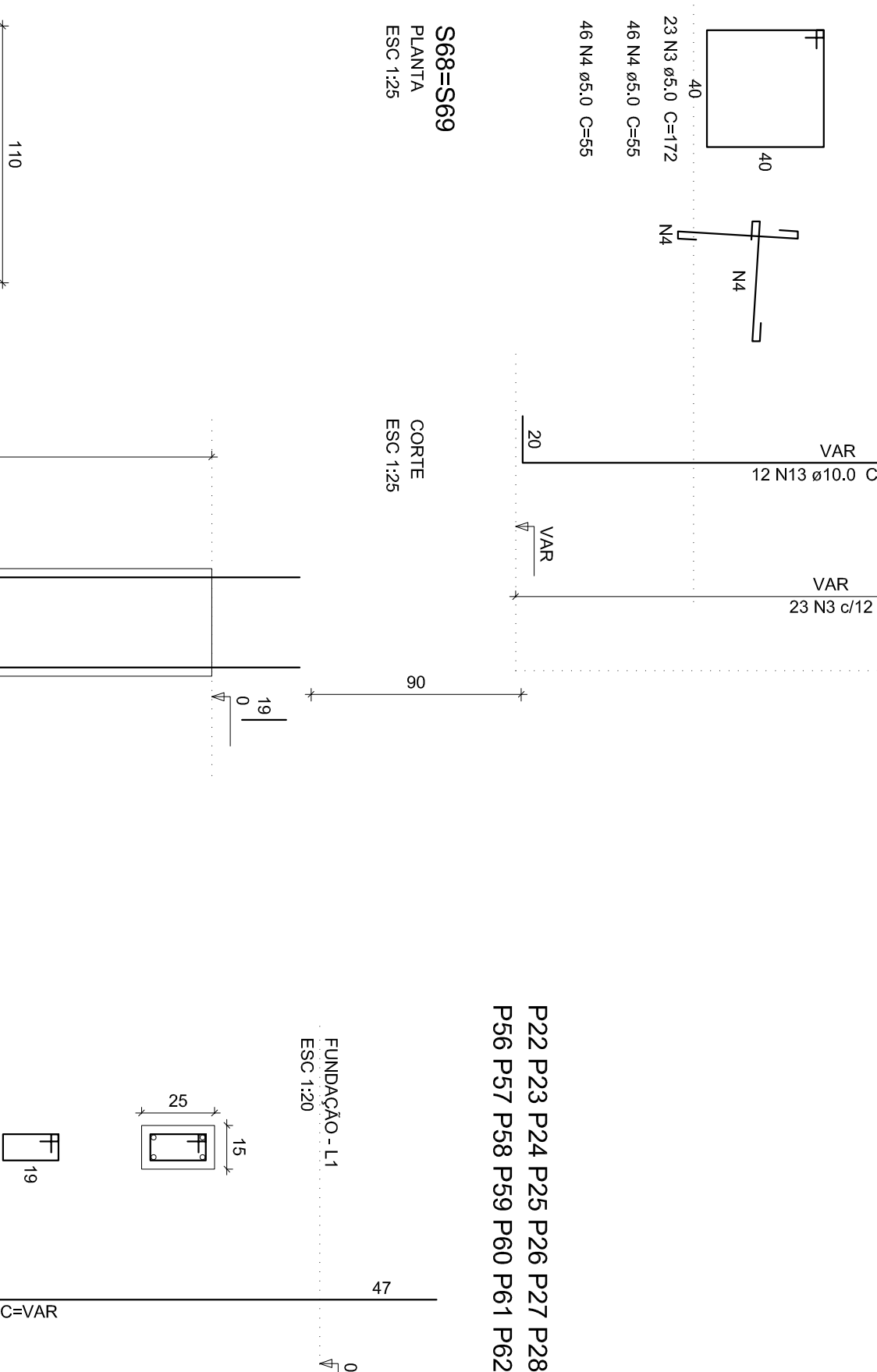
P11 P12 P13 P14 P15 P16 P17 P18 P19 P20 P33 P57 S11 S12 S13 S14 S15 S16 S17 S18 S19 S20 S33 S57



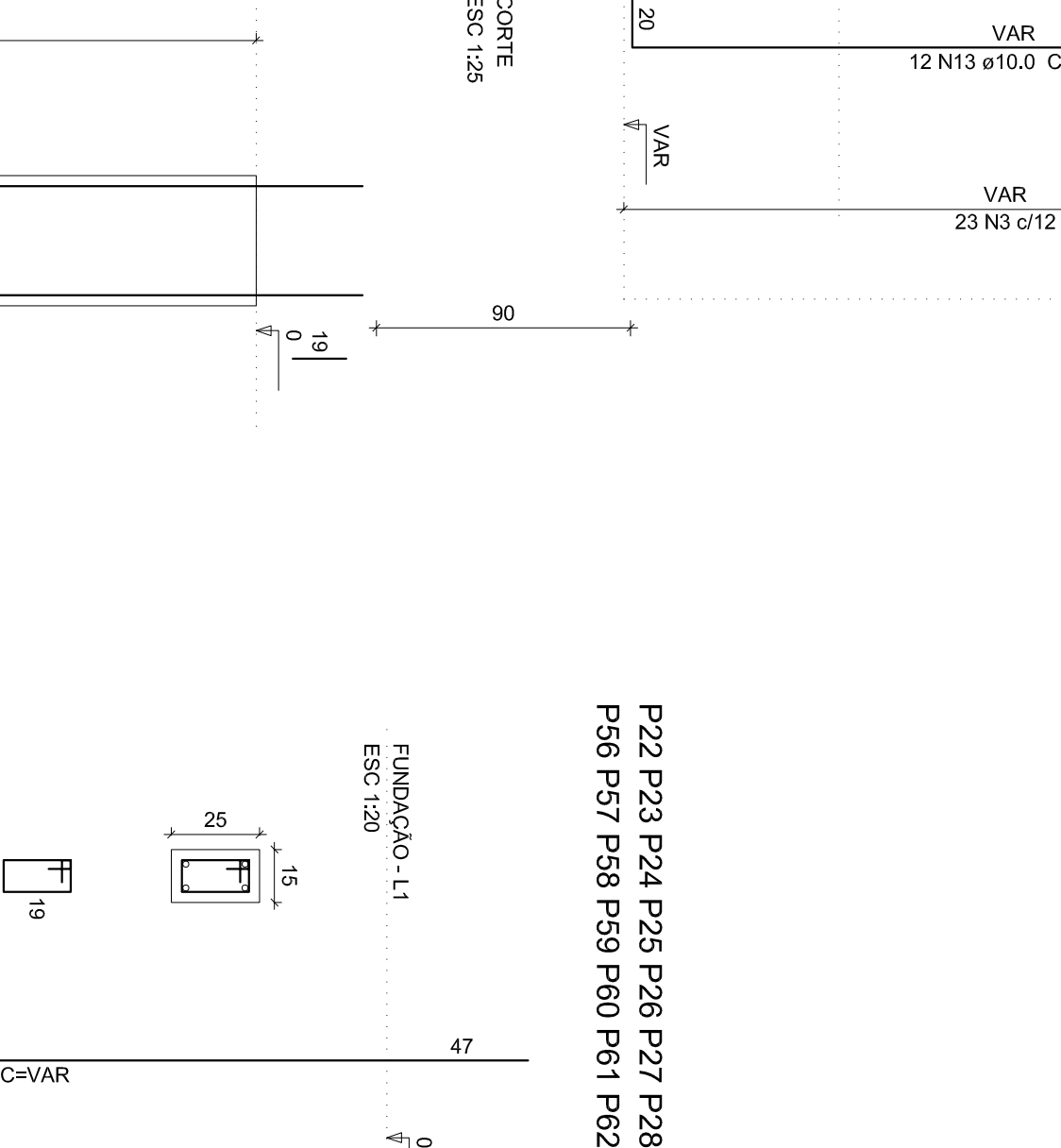
P68-P69



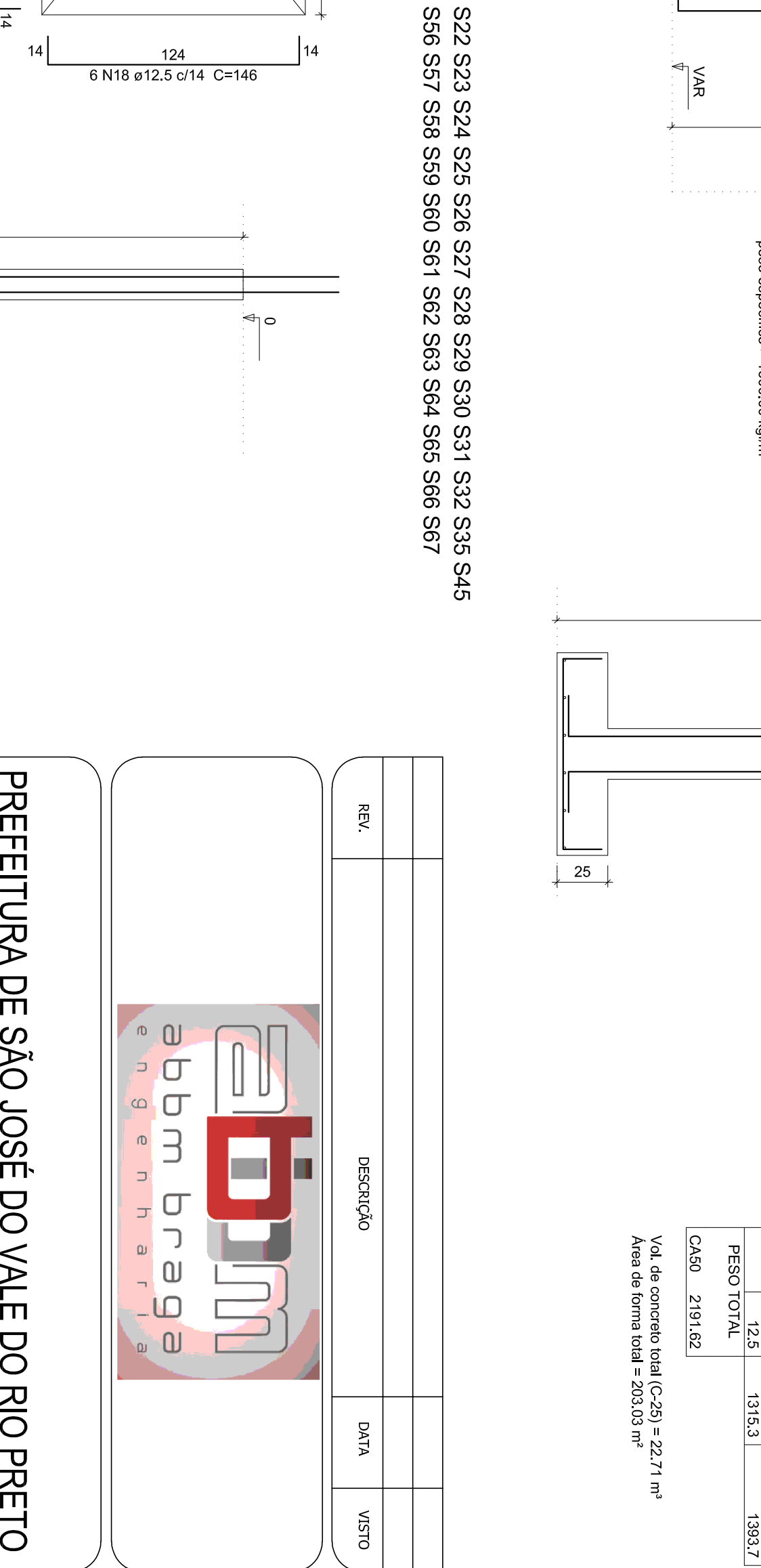
S68-S69



P62 P23 P24 P25 P26 P27 P28 P29 P30 P31 P32 P35 P45



S22 S23 S24 S25 S26 S27 S28 S29 S30 S31 S32 S35 S45



Relação do aço

ACO	N	DM	Q	UNIT	C.TOTAL
CA50	1	5,0	207	78	211148
	2	5,0	92	52	4268
	3	8,0	102	52	4268
	4	8,0	12	1014	12188
	5	8,0	4	1008	4032
	6	8,0	4	1008	4032
	7	8,0	4	1008	4032
	8	8,0	4	1008	4032
	9	8,0	4	1008	4032
	10	8,0	4	1008	4032
	11	8,0	4	1008	4032
	12	8,0	4	1008	4032
	13	8,0	4	1008	4032
	14	8,0	4	1008	4032
	15	8,0	4	1008	4032
	16	8,0	4	1008	4032
	17	8,0	4	1008	4032
	18	8,0	4	1008	4032
	19	8,0	4	1008	4032
	20	8,0	4	1008	4032
	21	8,0	4	1008	4032
	22	8,0	4	1008	4032
	23	8,0	4	1008	4032
	24	8,0	4	1008	4032
	25	8,0	4	1008	4032

ACO	DM	C.TOTAL	PESO - 10 %
CA50	5,0	21945	3783
PESO TOTAL	1191,9	7751,9	

Vale de concreto total (C-25) = 19,38 m³

Aço de forma total = 316,17 m³

Relação do aço

ACO	N	DM	Q	UNIT	C.TOTAL
CA50	1	5,0	408	78	31824
	2	5,0	908	52	47216
	3	5,0	46	172	7912
	4	5,0	380	52	19760
	5	5,0	380	52	19760
	6	5,0	380	52	19760
	7	5,0	380	52	19760
	8	5,0	380	52	19760
	9	5,0	380	52	19760
	10	5,0	380	52	19760
	11	5,0	380	52	19760
	12	5,0	380	52	19760
	13	5,0	380	52	19760
	14	5,0	380	52	19760
	15	5,0	380	52	19760
	16	5,0	380	52	19760
	17	5,0	380	52	19760
	18	5,0	380	52	19760
	19	5,0	380	52	19760
	20	5,0	380	52	19760
	21	5,0	380	52	19760
	22	5,0	380	52	19760
	23	5,0	380	52	19760
	24	5,0	380	52	19760
	25	5,0	380	52	19760

Vale de concreto total (C-25) = 22,71 m³

Aço de forma total = 253,03 m³

Relação do aço

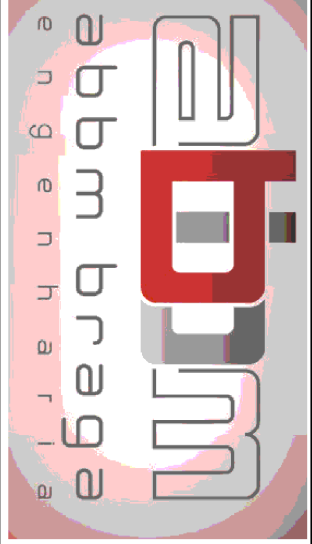
ACO	DM	C.TOTAL	PESO - 10 %
CA50	5,0	21719	3686
PESO TOTAL	125	11513	1983,7

Vale de concreto total (C-25) = 22,71 m³

Aço de forma total = 253,03 m³

Relação do aço

REL.	DESCRIÇÃO	DATA	USO



PREFEITURA DE SÃO JOSÉ DO RIO PRETO

SECRETARIA DE PLANEJAMENTO E GESTÃO

REFORMA E AMPLIAÇÃO DO NOVO CENTRO ADMINISTRATIVO (ANTIGA COOPERALE)

PROJETO ESTRUTURAL

PLANTAS DE VIGAS TERREDO E DETALHE SAPATA E ARRANQUE

ABBM BRAGA COMÉRCIO E SERVIÇOS LTDA - ME

JULIO ODONE BRUNO TELES

03